



Preschool Press



Message from the Principal



Dear Parents,

This is your first edition of the **Preschool Press**. Each month (October –May) you will be receiving a copy of the **Preschool Press** in your child's backpack. Each issue will contain calendar updates; as well as information regarding health, motor, language, and literacy development along with much more helpful information. Please take time to read through each newsletter.

Outside Play: Although the weather is ever changing, preschool children play outside everyday. Please be sure to send appropriate clothing for your child to go outside. **Label** each item of clothing your child will be wearing. It is amazing how many blue, black, or pink jackets, snow pants, hats, etc show up in one classroom.

Important Reminders about attendance– Children are Learning from our start time of **8:30** until we release at **3:45**. Please allow your child to experience greeting their classmates each morning and learning routines for ending their day. Please call the office (**734-997-1245 option 2**) each time your child is absent. We are required to complete and submit weekly health reports to the Washtenaw County Health Department. We need

detailed information regarding the reason for the absence:

- Child's name
- Teacher
- Symptoms the child is experiencing (fever, vomiting, diarrhea, cough, etc)

We cannot complete accurate reports without this information. Only illness, never personal information, is included in our weekly reports.

Family Events – We will have several family activities planned for this year, and are in the process of creating the schedule. These are great opportunities to show your interest and support of your child's education. Look for updates in the newsletters, and notes will come home in your child's backpack.

School Grounds:

Our school grounds are a **Smoke Free** environment. That includes the parking lot.



Also take time to put your cell phone away when entering the building, and while driving. Your child has a lot to tell you when they see you. Giving them your undivided attention shows them you value them and their education.

Michelle Pogliano, Principal



Bus Safety: To allow full day children access to the playground we are loading and unloading the Mid-day buses in the front of the school between 11:30 - 12:45. We have done this in past years at the northern end of the parking lot. During that time there may be buses in the front of the building. In the presence of Traffic, the laws regarding stopping for any bus with **Red Lights Flashing** and the **Stop Sign** extended apply and is a ticketable offense. Please obey all traffic laws and do not pass the bus when lights are flashing and help keep our children safe.

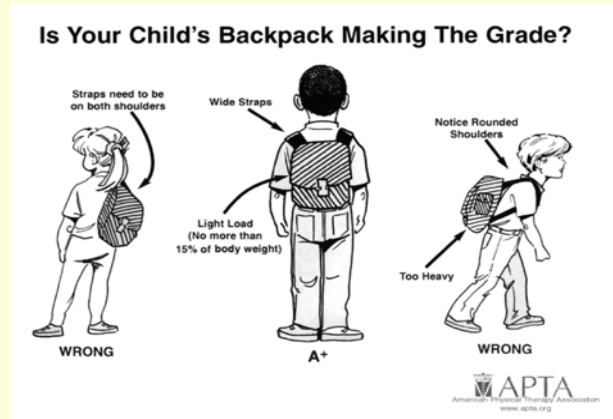
Bus Transportation: *as stated in your Student Handbook:* Parents need to be outside and waiting for the bus at least 10 minutes before Drop-Off and Pick-Up times. Transportation times do vary and sometimes shift from month to month. October changes will take effect on October 7, 2019. If your child's bus stop or time has changed it will be reflected on their bus tag and you will receive a Goldenrod (orange) sheet explaining the change in your child's backpack. The person picking your child up from the bus **must** have Photo ID each day and be listed on your child's Emergency Information Record, as there could be a substitute drivers on any given day.

FROM THE PHYSICAL THERAPY CORNER, KATHY GAINES, PT**MORE REASONS TO CHECK YOUR CHILD'S BACKPACK!**

It's important to check your child's backpack every night to read notes from the school or teacher, see the work your child has done, etc. In addition to staying informed about what's going on at school, protecting your child's back from now until high school is another great reason to take out extra materials each night.

- The weight of the backpack should not exceed 10-15% of the child's weight.
- If the child is leaning forward to carry their backpack, it's too heavy and the load needs to be lightened! Only carry necessary items back and forth to school.
- Teach your child to bend at their knees to pick up any heavy object, including their backpack.
- The heaviest items should go into the backpack first so they are closest to the child's back, causing less strain on muscles.

- Make sure your child wears their backpack correctly:



both shoulder straps should be worn, as well as the

Some Tips for Language Development from your friends in the Speech and Language Therapy Department

Next time you are shopping for food, here are some ideas to try with your preschool child!

* "Let's find something... (category can be color or a food group or texture)..."green or red /lets find a fruit or a vegetable / "lets find something smooth or bumpy."

* Talk about who likes and doesn't like an item.

* Talk about how we eat a food, whether we cook it, cut it, use a dish or eat with our fingers!

* Do we eat it when it's hot or cold?

Keep in mind, children usually talk more when adults don't ask too many questions!!

**Save your Box Tops**

Please continue to save your Box Tops from General Mill, Progresso, Hanes and Kleenex Products plus many others. Just clip the 10 cent coupon and turn them in to the office or your child's teacher. The money we earn will be used toward our school's supplies. Thanks for helping us earn more money to benefit our students!

**IF YOU HAVE NOT TURNED IN YOUR CHILD'S PHYSICAL:**

Please also be aware that, per **State of Michigan Child Care Licensing Regulations** we must have a copy of your child's physical exam form by **October 4 th, 2019 (10/4/2019)**:

Within 30 days of initial attendance, 1 of the following shall be obtained and kept on file and accessible in the center:

(c) For preschoolers: A physical evaluation performed within the preceding year signed by a licensed health care provider. Any restrictions shall be noted.

If we do not have a copy of your child's physical exam by October 4 th, your child will not be allowed to attend school beginning October 7, 2019

A Message from Nurse Amy:

Regarding Hand Foot And Mouth Disease From Washtenaw County Public Health

What is Hand, Foot and Mouth Disease?

Hand, Foot and Mouth Disease is a highly contagious human disease caused by coxsackievirus or other enteroviruses. It usually occurs in the summer and early fall. It frequently affects young children in summer day camps and day care facilities. It is NOT the same as Foot- and-Mouth disease, which is primarily an animal disease.

What are the symptoms?

- sudden onset of fever
- sore throat
- small white blisters appear in the mouth 4-6 days after onset of fever
- loss of appetite
- nausea and vomiting
- rash on the palms and soles of the feet, as well as on the knees, elbows, buttocks, or genital area



How is it spread?

The disease is spread person-to-person through direct contact with the discharge from the infected person's nose, throat, feces, or fluid in blisters. Infected persons are the most contagious during the first week of illness, but can still pass the infection weeks after their symptoms have gone away.

How is it treated?

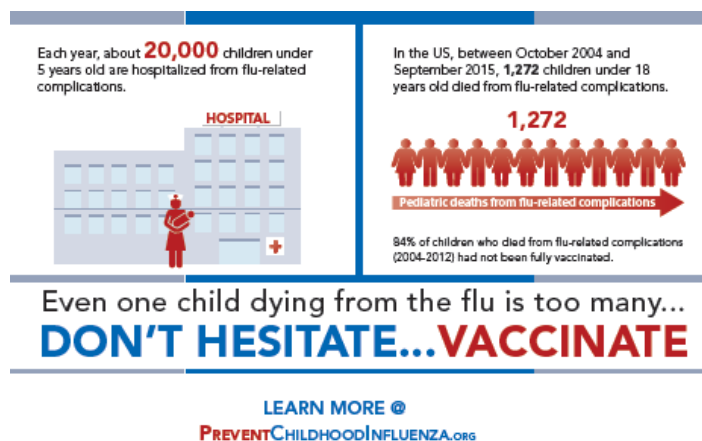
- There is no specific treatment for this disease. • Treat fevers with non-aspirin products (acetaminophen, ibuprofen) and make sure the person drinks enough water to stay well hydrated.
- Use mouthwashes or sprays to numb mouth pain.
- If you think that you or your child has symptoms of hand, foot, and mouth disease contact your healthcare provider.

Visit our website at: <http://publichealth.eWashtenaw.org>

Important: Flu season is around the corner! Protect yourself and your family this season with an annual flu vaccine for everyone in your family who is 6 months and older. While the timing of flu season is unpredictable, seasonal flu activity can begin as early as October and last as late as May. CDC recommends that people get vaccinated by the end of October, if possible. It takes about two weeks after vaccination for antibodies to develop in the body that protect against influenza virus infection.

You have the power to protect your family against flu this season. Get yourself and your family a flu vaccine. Fight the Flu!

Learn more at:
www.preventchildhoodinfluenza.org/school



Last spring the Preschool voted on a mascot and a Purple Panda was chosen. See how many pandas you can find in the hallways at the Preschool!



Fun facts:

**Did you know that Wednesday is Purple Panda Day at Westerman?
You will see staff wearing our Purple!!**

OCTOBER 2019

Monday	Tuesday	Wednesday	Thursday	Friday
30	1	2 Student Count Day!	3	4 OCTOBER IS: Fire Safety Month 
7	8	9 Fluoride Varnish	10	11
14 Hearing & Vision Retest (HS/GSRP)	15 Hearing & Vision Retest (HS/GSRP)	16	17	18
21	22	23 Full day of School for Westerman Bldg. and Mitchell Early Release: Allen & Thurston @ 1:29 pm	24	25
28	29	30	31	2

NEW VISITOR MANAGEMENT SYSTEM

Dear Preschool Families,

As part of the Ann Arbor Public School's commitment to student safety, every school in the district is instituting a new visitor management check-in system at the main entrance greeter desk or in the front office.

To help us keep track of who is in our schools during the school day we ask that you present your identification, either a driver's license or identification card, when you visit the school. If you don't have an identification card the Office Professional or Community Assistant at the high schools will assist you. Once you have presented your identification the first time you will be in the system and will no longer need to present your ID for future visits. This is true for visits to other AAPS schools as well.

The following types of ID's will be accepted:

State Issued Drivers License
Military Issued ID
Mexican Consulate Card
Passport ID Card (not passport book - will not fit into reader)

For families who do not have these ID's, they will need to bring in one of the following for us to manually enter them into the system, ***please note, it must be an official record, copies will not be accepted, full name and date of birth must be legible:***

Passport (US or Foreign)
Birth Certificate
Permanent Resident Card or Alien Registration Receipt Card
Employment Authorization Document
Voter Registration Card
Native American Tribal Document
Driver's License Issued by a Canadian Government Authority

The system creates a visitor badge for you to wear while you are visiting the school. Please remember to check out at the office or desk where the badge was issued upon completion of your visit.

The visitor management system also checks your identification against the national sex offender data base.

The benefits of a visitor management system for our schools includes:

- Up-to-date information about who is in our schools, where they are and the time they entered, especially important during any type of emergency drill or actual emergency situation.
- Creates customized visitor badges with photos to easily identify visitors, contractors, volunteers, parents.
- Provides instant and accurate screening off the national sex offender registry and custom alerts for custody restrictions, banned visitors, etc.

While the district must comply with the Children's Online Privacy Protection Act (COPPA), the Family Educational Rights and Privacy Act of 1974 (FERPA) and the Children's Internet Protection Act (CIPA), due diligence was conducted to ensure visitor's Personal Identifiable Information (PII) is secure.

Note that the cost for the selected system comes as part of the Michigan State Police School Security grant that AAPS received, the second largest grant award in the state.

We are pleased to provide another layer of security for our students and staff during the school day.

Thank you,

Michelle Pogliano



- ✓ **SHOP**
- ✓ **DONATE**
- ✓ **SUPPORT**
- ✓ **FUNDRAISE**
- ✓ **VOLUNTEER**

2280 S. Industrial Hwy. • a2ptothriftshop.org

Supporting Ann Arbor Public Schools and its Students Since 1993

Shop Happenings August-November 2019!

- ❖ Are you ready for school?
Shop our **Labor Day 50% Off Everything Sale!**
- ❖ Hey Students! Do you need Service Hours?
Volunteering at our shop is a fun way to earn them!
- ❖ Do pumpkins and ghosts get you excited?
Check out our **Halloween** costumes and decorating items!
- ❖ Interested in raising unlimited funds for your group or school?
Participate in our **Veteran's Day Raffle!** You get 100% of ticket sales!



**Don't forget to visit our Showcase,
where you'll find unique and
collectible treasures every day!
(Located next to our Donations Door)**



SHOP HOURS: MON-FRI 10-7 / SAT 9-6 / SUN 11-5

DONATION HOURS: MON, THU, FRI 10-6 / CLOSED TUES & WED / SAT 10-5, SUN 12-4

Call **734-996-9155** to schedule a FREE Furniture Pickup





CASH PRIZES

Ann Arbor PTO Thrift Shop

Tickets \$5

VETERAN'S DAY

FUNDRAISING RAFFLE

All proceeds support the
Ann Arbor Public Schools,
 its PTOs and students!



**BUY A TICKET,
 SUPPORT OUR SCHOOLS!**

- Tickets are available to buy at the shop and through a variety of AAPS groups.
- Drawing will take place at the PTO Thrift Shop on Veteran's Day!
- FOURTEEN winners will be chosen on November 9, 2019, 5:00 – 5:30 PM!
- Over \$4000 in prizes will be awarded!
- For more information, visit our website @ a2ptothriftshop.org
 2280 S. Industrial Hwy, Ann Arbor, MI 48104. a2ptothrift@gmail.com

FIRST PRIZE of \$1000
TWO 2nd PRIZES of \$500
EIGHT 3rd PRIZES of \$250
plus THREE BONUS \$100 A2 PTO Thrift Shop Gift Certificates

Must be 18 or older to purchase tickets. Need not be present to win. One prize per winner. All prizes subject to Federal and Michigan Income Tax. *Winner must present valid government ID. #R54556

Ticket No. _____
Name _____
Address _____
Phone _____
Need not be present to win. One prize per winner.
\$5 per Ticket
Ann Arbor PTO Thrift Shop a2ptothriftshop.org
2019 VETERAN'S DAY RAFFLE
Saturday, November 9 th , 2019 5:00-5:30 pm 2280 S. Industrial Hwy. Ann Arbor, MI 48104
First Prize \$1000 CASH! Two 2 nd Prizes ~ \$500 each Eight 3 rd Prizes ~ \$250 each Plus Three \$100 Gift Certificates to the A2 PTO Thrift Shop
Must be 18 to purchase tickets. Raffle License # R54556
Ticket No. _____

